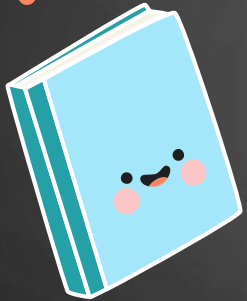


WELCOME TO...



TOM COX INTERMEDIATE

WELCOME TO...

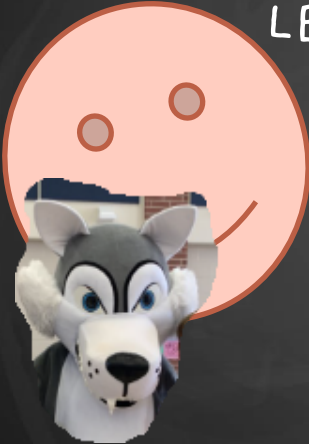


TOM COX INTERMEDIATE

VISION



TO PROVIDE A RIGOROUS AND ENRICHING EDUCATION IN A SAFE ENVIRONMENT THAT SUPPORTS THE UNIQUE NEEDS OF ALL STUDENTS. WE STRIVE TO DEVELOP LEARNERS WHO ARE RESILIENT AND RESPONSIBLE MEMBERS OF A GLOBAL COMMUNITY.



MISSION

GROWING LEARNERS TO BE PRODUCTIVE GLOBAL CITIZENS!



GUIDELINES FOR SUCCESS:

TIMBERWOLVES...HEART TO L.E.A.D.



LEARNERS

Engaged in learning,
problem solvers, innovators



APPRECIATE

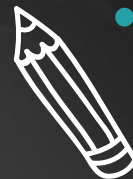
We are all unique! We
respect and celebrate our
differences and similarities

EMPATHETIC

Awareness and
understanding of each
other's thoughts and
feelings

DEDICATED

Committed to achieving ones goals
even when it is hard! Inspire
others to achieve their goals



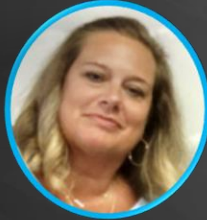
INTRODUCTIONS



PRINCIPAL: DEBORAH SPOON
TUFF THE TIMBERWOLF



COUNSELOR
TARA BODIN



ASSISTANT PRINCIPAL
VALENTINA MAJESKI



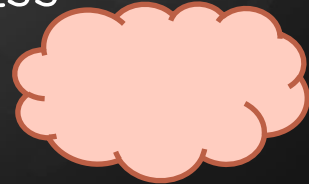
COUNSELOR
JESSICA KOWIS



ASSISTANT PRINCIPAL
EMMA TACKETT



STUDENT SUCESS
MANAGER
TEENA JOBLIN



Front Office And Clinic

Front office Staff



Ms. Pecina



Ms. Pena



Tuff



Peims

Ms. Roberts

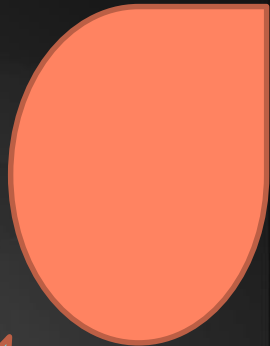


TCI Clinic



MS. SAXE NURSE

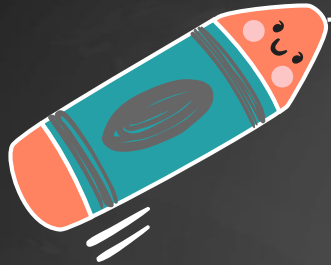
MS. DARLAND CLINIC ASSISTANT



LET'S TAKE A LOOK AT
A DAY IN THE LIFE OF
A TIMBERWOLF!



TCI DAILY SCHEDULE



SCHEDULE

7:45 DOORS OPEN TO STUDENTS

8:30-8:45 Locker Time

8:50-8:55 Morning Announcements

8:55-9:15 Timberwolf Time

9:17-10:49 First Block

10:51-12:52 Second Block

12:54-2:24 Third Block

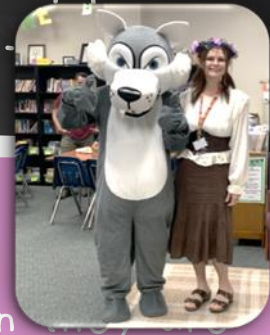
2:27-3:57 Fourth Block

4:00 Dismissal



MORNING PROCEDURES

- School Doors open to students at 7:45.
- Breakfast is served at 8:10 in the cafeteria.
- Students remain in the cafeteria until 8:30 when released to class.
- Band Instruments:
 - Students with large instruments will be released to take them to the band hall between 8:20 and 8:25.
 - Students with small instruments will place them in their locker or classroom.
- Students are expected to locker and be in the classroom by 8:50.
- Morning announcements begin at 8:50.



WHAT'S FOR LUNCH

- ❑ Students will have 30 minutes for lunch.
- ❑ All students sit with their home-base class.
- ❑ Recess: a recess will be offered 15 minutes into the lunch time. Student may go outside to recess or choose to remain in the cafeteria.
- ❑ Parents/Guardians are welcome to eat lunch with their child at the visitor's tables during their child's lunch period.
- ❑ Microwaves: Microwaves will be available during lunch times for students to heat their food (no popcorn or items that take longer than 3 minutes).





DISMISSAL PROCEDURES

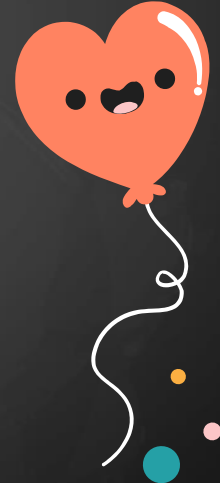


DISMISSAL BEGINS AT 4:00 PM. ORDER OF DISMISSAL IS AS FOLLOWS:

- 6TH GRADE BIKERS/WALKERS AND FIRST WAVE OF CAR RIDERS
- 5TH GRADE BIKERS/WALKERS AND FIRST WAVE OF CAR RIDERS
- ALL OTHER CAR RIDERS
- BUS RIDERS ARE CALLED AS BUSES ARRIVE

PARENTS OF CAR RIDERS:

- Please pull forward with the flow of traffic.
- Parents must enter and follow car rider line to pick up student
- Students will not be released to a car waiting on the street



OTHER PROCEDURES

EARLY PICK-UP OF STUDENTS;

- Students who are leaving school early need to be checked out by 3:30.
- Parents must come inside the school and check the students out after presenting identification.

TRANSPORTATION CHANGES:

- If a student needs to ride a bus other than their own due to a special situation the student must bring a note from a parent or guardian to the front office at the start of the school day.
- Any other transportation changes need to be submitted to the front office as early as possible.



ACADEMICS/FINE ARTS/P.E.



CORE TEACHERS

Students are assigned to a LEARNING COMMUNITY and a HOMEBASE. They will have 3 Core Teachers:

Language Arts (90 minutes)

Math (90 minutes)

Science/S.S. (90 minutes)

* Will have (1) 2 person team next year.

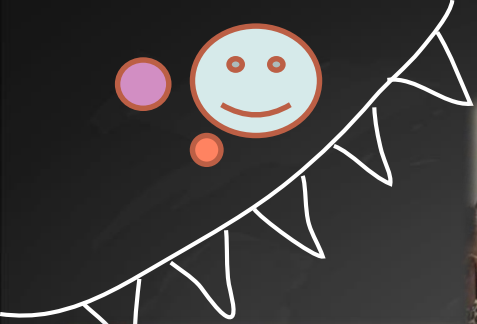
FINE ARTS/P.E. ☆

- Fine Arts (FA): Students attend a 45 MINUTE Fine Arts class each day. They may choose between Band, Orchestra, Art or Choir.
- Physical Education (P.E.): and a 45 minute P.E. each day.

TCI LEARNING COMMUNITIES

5th grade: Warriors, Howlers, Prowlers, Rangers, Guardians, Scouts,

6th grade: Wolfpack, Defenders, Hunters, Travelers, Trailblazers, Lobos



5TH GRADE STUDENTS WILL:
SOLVE PROBLEMS USING THE FOUR
OPERATIONS:

- Number and Operations
- Algebraic Reasoning
- Geometry and Measurement
- Data Analysis
- Students will learn to apply math to problems in everyday life, society, and the workplace.

General Education Math
Advanced Math
(set criteria)

5TH GRADE SOCIAL STUDIES



- UNITED STATES FROM 1565 TO PRESENT

Historical content includes:

Colonial period

American Revolution

Declaration of Independence

U.S. Constitution

Bill of Rights

Westward Expansion

Civil War and Reconstruction

Immigration and Industrialization

20th and 21st centuries.



5TH GRADE SCIENCE

Physical Science: Classify matter based on physical properties, light energy, circuits, and force and motion.


Earth Science: Identify landforms, weathering/erosion/deposition, slow and fast changes to the and patterns of change.

Life Science: Inherited traits, learned behaviors, adaptations, biotic and abiotic factors in an ecosystem, food webs, and different life cycle patterns.



ENGLISH LANGUAGE ARTS



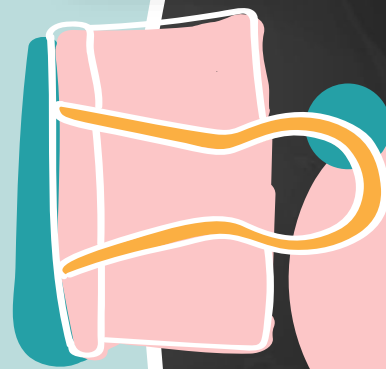
 **READING:** Read and understand a variety of literary and informational texts. Theme and Genre, Poetry, Drama, Fiction, Literary Nonfiction, Sensory Language, Independent Reading, Culture and History, Expository Text, Persuasive Text,

WRITING: Students compose a variety of written texts with an idea, coherent organization, and sufficient detail.

ORAL AND WRITTEN CONVENTIONS/RESEARCH

LISTENING AND SPEAKING

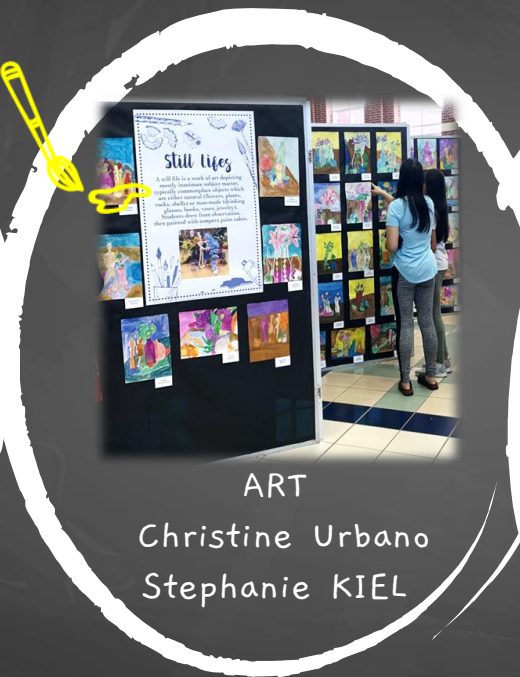
BUILDING A CULTURE OF READERS!



FINE ARTS



- **BAND**
Melissa Perry
Brian Eisemann



ART
Christine Urbano
Stephanie KIEL



ORCHESTRA
Lashaneen Martin



CHOIR
Katie Harris

FINE ARTS SELECTION SHEET



Tom Cox Intermediate 2023-2024

Please choose your fine arts choice for 5th grade. If you would like to play an instrument, be sure to visit our website to come in and try out the instruments. If your choice changes over the summer, you can submit a new choice or let us know when you return in the fall. We will assume the last choice is the final choice.

[Sign in to Google](#) to save your progress. [Learn more](#)

* Indicates required question

Student First Name *

Your answer

Student Last Name *

Your answer





Tom Cox Intermediate Fine Arts Elective Selections for the 2023 – 2024 School Year

Students at Tom Cox Intermediate attend PE and Fine Arts every day.

Fine Arts is the term used to cover Orchestra, Band, Choir, and Art. Students choose one fine art elective for the school year.

Art

Students and families are familiar with Art from elementary school, this is the visual art option. Our music/performing arts options are Orchestra, Band, and Choir.

Choir

Students who enjoy singing may be interested in Choir, where students learn to sing as a group. To learn more, scan the QR code. If you have questions about TCI Choir, contact Katie Harris, Choir Director at anharris@conroeisd.net.

Band & Orchestra

Students interested in learning how to play an instrument can choose between Band and Orchestra. Instrument interviews are coming up! Scan the QR codes below to find out more and to sign up for a time to try out the instruments of your choice through SignUpGenius.

Instrument Interviews for Band & Orchestra
Saturday, May 13 during the day
and after school, Monday, May 22.

Band

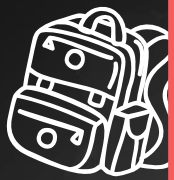


If you have questions about TCI Band, contact Melissa Perry mmperry@conroeisd.net

Orchestra



If you have questions about TCI Orchestra, contact LaShannen Martin lbmartin@conroeisd.net





#1 PRIORITY...SAFETY OF STUDENTS, STAFF, AND COMMUNITY



Safety first!

POSITIVE BEHAVIORAL
INTERVENTION AND SUPPORTS
(PBIS)



FOUNDATIONS



TCI DRESS CODE

All garments including shorts, skirts, and dresses must be an appropriate and modest length (mid-thigh). Pants may not be sagging or worn lower than undergarments.

No holes or tears above the mid-thigh are allowed in jeans, shorts, or skirts (tape or pins may not be used to conceal holes). Clothing/pants with words across the behind are not permitted.

No boxers, pajama bottoms, or sleep apparel are allowed.

If cell phones are brought to school, they must be turned off and placed in the student's locker.



Flip Flops, Slides, and shoes without a back may not be worn during P.E. classes. Slippers or Fussy type shoes are not appropriate for school.

- Sunglasses and shades are not to be worn while in the building.
- Hats, caps, bandanas, or other form of head covering shall not be worn.
- Piercings are to be worn in the ears only.
- No body tattoos are allowed.

a b c

TCI CLUBS



PEP SQUAD

POKEMAN



RUBIK'S CUBE

SIGN LANGUAGE

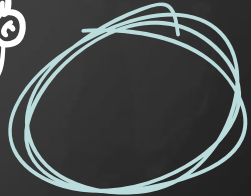
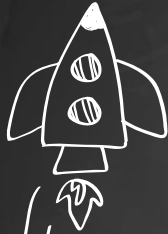
CHESS CLUB

ART CLUB

Dungeons and Dragons
STUDENT COUNCIL

CANINE CLUB

BATTLE WITH HEART BOOK CLUB



SEE YOU IN THE FALL



TOM COX INTERMEDIATE